

SALVO NEWS

WEDNESDAY, 8 NOVEMBER 2000

About ANTIQUE and RECLAIMED MATERIALS for BUILDINGS and GARDENS

208

Global warming, floods and reclaimed building materials

FLOODING across Britain and the recent 'petrol crisis' has brought the issue of global warming to the fore in a way not seen up to now.

The media hype, the bluster from government ministers, veiled threats from the insurance industry, and gleeful predictions of greens, has all fuelled public anxiety on the topic.

But who is speaking out for sustainability, for reuse of resources and, most importantly for the reclamation industry, for us?

It seems that the jury is still out on whether or not climate change is being caused by carbon emissions, mostly in the form of carbon dioxide gas given off when fossil fuels, especially oil, are burned.

The recent meetings in Kyoto failed to reach conclusive agreement on reducing carbon dioxide, although most governments signed up to the Rio protocol in 1993 where it was universally agreed that it would be a good idea to reduce carbon dioxide emissions to their 1990 levels by the year 2002.

This target will be missed, in some cases by miles. But it is this target which has driven, for example, the EU's directive on domestic waste recycling, that in turn gave rise to the UK landfill tax, which in turn has put very large sums of money into the hands of people who have said thankyou, but have made absolutely no difference to, for example, the amount of building materials reclaimed from demolition.

It's getting harder

The encouraging comments from all concerned—the 'we must reuse resources to save energy' lobby—seems to indicate that the salvage industry should be getting a big pat on the back.

Tax incentives, easing of

planning restrictions, council tax rate reductions, grants, employee subsidies, environmental awards, OBE's and knighthoods are the kind of thing that springs to mind.

Instead, new regulations have created, and continue to create, ever more hurdles to the reclaimed building materials sector.

Things have become so difficult that reports to Salvo in the past year have indicated that local salvage in local established salvage yards is becoming a scarce phenomenon.

Runners without any fixed premises, who do not pay VAT, or any other sort of tax, but who increasingly look to end-users through the internet, local free newspapers, and other more direct means, undermine the ability of stockholding businesses to compete.

Stockholding is absolutely crucial to the success of the reclamation industry. No amount of just-in-time networking will substitute, in the foreseeable future, for the ability of a business to stockpile materials for local reuse.

More and more, stockholding dealers with good established businesses are looking to either move into the sale of new reproduction materials, or using their stronger purchasing power and trading nous to buy larger quantities from considerably further distances, often overseas.

Energy saving

HOW much carbon dioxide is saved by the reclaimed building materials, and architectural salvage, and architectural antiques sector?

The equations are complex. There is no agreed method by which energy savings of this type can be calculated. Do you just take the embodied energy in the materials themselves? For example, 12 bricks embody the

energy equivalent of a gallon of petrol. Do you add the energy cost of dismantling, cleaning and transporting the bricks? Do you add the energy costs of storing them? The energy costs of delivering them? A proportion of the energy costs of the infrastructure needed to deliver them, like the maintenance and renewal of vehicles, roads and ships?

There is no industry standard which, in turn, has resulted in open season on reclaimed materials by new construction materials manufacturers.

Damn the reclaimed

On the web site of the Brick Development Association is a veiled indictment of reclaimed bricks, while ever more reclaimed brick look-alikes are being manufactured and sold into the market created by reclaimed. Ironically, the brickmakers now appear to be making more out of creating airspace by excavating clay than they do out of making the bricks themselves.

McAlpines, who own the big Welsh slate quarries ran an advertising campaign in the building glossies damning reclaimed slates. And they also import foreign slates.

There are other examples. And this is just the public face of the industry. Behind the scenes the manufacturers have lobbyists working to discourage the reuse of salvaged materials in London and Brussels. The reclaimed sector represents a fraction of the total construction materials market, probably less than one per cent, and cannot fight back. It is an uneven playing field.

Ethical help? No

ONE of the delegates at Kyoto was Tessa Tennant who we

interviewed a few years back when she was a green pensions fund manager. She had no intention of supporting the reclaimed sector, instead putting large sums into businesses like Baggeridge Brick who produce new bricks, and whose environmental policies ignore end of life reuse of their own products.

New brick manufacturers want to see old bricks crushed, not reclaimed.

Friends of the Earth have marginal interest in reclaimed, and greens in general seem unable to grasp its importance in saving energy. But then they do not have any hard facts and figures about the levels of energy saved.

Insurance companies

ONE would have thought that insurance companies would be in the vanguard of encouraging the reuse of materials to reduce global warming, reduce climate change and hence reduce flooding and tempest claims.

Far from it. In many instances it is the insurers who discourage the reuse of reclaimed materials by architects when they refuse to allow them to include reclaimed materials in their 50 year professional indemnity insurance cover for buildings.

Perhaps, like the misinformation they put about on stolen garden ornament, they would like to encourage global warming in order to be able to increase premiums and make more profit.

Money in global warming

SO, there is money to be made out of global warming induced problems.

Insurers will charge more

SalvoNEWS

SalvoNEWS (est 1992) © Copyright Salvo.
All rights reserved.

Salvo, PO BOX 333
CORNHILL ON TWEED TD12 4YJ
Northumberland, England

TELEPHONE UK 01890 820333
International +44 1890 820333

FAX UK 01890 820499
International +44 1890 820499

INTERNET
SalvoWEB <http://www.salvoweb.com>
Theft Alerts <http://salvo.theft-alerts.com>
EMAIL tk@salvoweb.com

PRODUCTION
Edited (and mainly written) by T Kay
Advertising & proofing by Hazel Matravets
Artwork generated using Macintosh iMacs, set in
Pagemaker 6.5 and output to Apple Laserwriter
8500 600dpi A3 printer. Max screen ruling 80dpi.
Max black 85%, 70% recommended.

PRINT
Printed with zero solvents on 'Repeat' paper
made with 100% recycled post-consumer waste
in Scotland.

PUBLICATION FREQUENCY
Every two to three weeks (approx)

CIRCULATION
Total circulation varies with each issue.
Subscribers in UK, Ireland, France, Belgium,
Holland, Germany, USA, Canada, Australia,
Israel and Japan. Controlled free circulation to
journalists at UK (and some foreign) newspapers,
TV and magazines. Each edition has a unique
circulation to buyers of the Salvo Pack.

SUBSCRIPTIONS—25 ISSUES
UK £50 (cheque, credit card, debit card)
£1860 Ireland (cheque), France 600F (cheque).
Elsewhere, credit card or eurocheques only:
Europe £60, US & Canada £75, World £80 (Sorry,
no Amex)
NB: Please do not send credit card details via
email. Use FAX, post or telephone.

CONTRIBUTIONS are always welcomed,
humorous or serious, but nothing libellous or
gratuitously offensive

POST: The Editor, SalvoNEWS, PO BOX 333, CORNHILL ON TWEED TD12 4YJ, Northumberland, England
EMAIL: tk@salvoweb.com
FAX: 01890 820499

LETTERS

LONG WORDS

Warwickshire
25th October 2000

SIR,—Thanks for the free plug (*SN207 front page*) but I've decided I don't care about long words any more and I'm staying put! When it came to it, I could not bear to sell, so I am now all re-enthused, refitting the shop and expanding the range to old lighting and curtain poles etc. No reproductions! I am also struggling to set up a web site, so watch out for thevictorianironmonger.co.uk

Yours etc,
Dave Thompson
The Victorian Ironmonger

RARE GEMS

Jersey
22nd September 2000

SIR,—We recently attended Jersey's small but locally prestigious agricultural fair. Around two hundred trades were represented with stands, mostly large corporate companies. This said, the judges were unanimous in choosing our new venture as a very good

example of local resource sustainability. The director of our government's Environmental Services department stated, "It's great to see a local company demonstrating that good environment practice can make good business sense; this approach saves money, makes best use of resources and helps maintain Jersey style." This style is particular to Jersey because we lie about eleven miles from the coast of France but have offered our allegiance to the UK for many hundreds of years. So we enjoy a conglomerate style of architecture ranging from early Norman French to Victorian. We believe we offer the architectural antiques market some rare and very interesting gems.

Yours etc,
Jody Hingston
Héritage Stonemasonry Ltd
Tel 01534 605099

JONAH

Bedfordshire
11th August 2000

SIR,—To make you smile: Laying here in my last few hours. Do you remember, dear, when we first met and my factory burnt down, but

you still stood by me; and when my chain stores went bankrupt, you stood by me; and when, after starting all over again, my hotel went bust and you still stood by my side and now, lying here after stepping in front of a bus, you are still at my side—Darling, you're nothing but a bloody Jonah!

Yours etc,
Sylvia Holdstock
Find Me Another (formerly S&J Acquisitions—see page 4)

SALVO GUIDE

Papua New Guinea
14th September 2000

SIR,—Comrades, greetings from Papua New Guinea. My name is Captain Sere Kala and I am the Public Relations Secretary for the Papua New Guinea Command. I would like to request if you could send me a copy of the 2000 Salvos Guide Pocket Booklet. Thankyou & God Bless.

Yours etc,
Captain Sere Kala
Community Relations Secretary

Decorative Architectural Features, Chimneypieces & Conservatory Sculpture

SOTHEBY'S SOUTH:
TUESDAY 21st NOVEMBER AT 10am

CATALOGUE: £12 UK/£13 Europe (inc. p&p)
includes 22-29 November Decorative sales
To order, please telephone 01403 833525

ON VIEW
Friday 17th & Monday 20th November, 10am to 4pm,
Saturday 18th November 9.30am to 4.30pm

ENQUIRIES: Jackie Rees or Rupert van der Werff
Telephone 01403 833560
jackie.rees@sotthebys.com

SOTHEBY'S SOUTH
Summers Place,
Billingshurst,
West Sussex RH14 9AD

www.sotthebys.com



SOTHEBY'SOUTH

THOS. WM GAZE & SON

DISS AUCTION ROOMS

Saturday 11th November 10.00am

Rural & Domestic Bygones

*1200 lots to include
woodworking tools, horse
tack and harness, Hovis hand
cart, flower seller's pram,
blacksmith's, carpenter's,
cobbler's and other tradesmen's
effects, traps and gamekeepers'
equipment, domestic appliances,
advertising ephemera, shop
display and decoy ducks*

Contact: Carl Willows. Viewing: Thursday 9th 2.00–8.00pm,
Friday 10th 10.00–4.00pm and Sale Morning from 8.30am
Double catalogues: £5.00 by post and online from www.twgaze.com

ROYDON ROAD, DISS, NORFOLK, IP22 3LN
Phone: (01379) 650306 FAX: (01379) 644313 Email: auct@twgaze.co.uk

Fast catalogue text download three days prior at <http://www.salvoweb.com/auctions>

NEWS

premiums. Rebuilding of storm damage, and flood prevention schemes, will increase the profits of new materials suppliers. Landfill operators are benefitting from the landfill taxes. Professionals are being paid to sort it all out. Huge grants are awarded to consultants to come up with solutions.

Reclaimed materials threaten their existence, albeit in a tiny tiny way. After all, it is unlikely that the reclaimed sector will furnish more than a tiny percentage of the construction materials needed in the foreseeable future.

In a hundred year's time this figure may rise to ninety per cent, but nothing will be achieved unless the reclaimed industry acts, and acts decisively.

What Salvo does

FOR the past few years we have been advising architects and others about the reuse of reclaimed materials.

We have undertaken 'reclamation audits' on various schemes around the UK. Recently we advised on a major housing scheme in Liverpool where the demolition of several fourteen storey tower blocks was undertaken.

Each time we have done a reclamation audit, a new aspect of the reasons for reclaiming crops up, and new solutions need to be considered. For example, in Liverpool we looked at reusing window

glass and 1970's electrical sockets. In Wolverhampton we looked at the reuse of night storage heaters.

We recently advised the architects of the much-maligned and over-funded Earth Centre in Doncaster about the reuse of aluminium truck body sides.

Increasingly, we are giving figures for embodied energy and carbon emissions saving. It is not enough to say, "reclaiming makes sense", you have to also give sound energy reasons too.

What you want

OUR recent reader survey showed that some readers were disenchanted with Salvo for not covering salvage and reclaimed. So, starting with this edition, we are rectifying this.

A third of you said that we should have more on green issues, and a third said we should have less. The remainder gave no opinion (in other words we should have the same).

The trade may not see green issues as overly important, especially since customers buy materials (probably more than 80 per cent) mainly for reasons that are ostensibly nothing to do with environmental concerns.

But, therein lies the nub of the

problem. Your customers may not be interested in green issues, but the government is increasingly only motivated by green arguments.

A new Salvo report

IN order to increase the ability to source and sell materials to customers who may not be concerned, the global warming factor must be looked into so that the powers that be can be persuaded to be more helpful towards the reclamation industry.

We shall calculate the impact of the trade's activities on reducing global warming in Britain, using industry statistics from the 1998/99 *BigREc* survey (part sponsored by Salvo, the BRE and the DETR).

We will produce figures for energy saving in product areas, and a figure for the whole industry in the UK (and Europe) and these figures could then be used in marketing reclaimed materials, for the industry as a whole and for individual businesses.

We will produce a report, to present these figures to the government, the EU, the green movement and others in a position of influence. We hope to have completed this work by summer 2001.

If anyone would like to help pay for it, we would be grateful for contributions. Our guess is that it will cost between £15,000 and £20,000 to produce this information.

One major sponsor could get their name attached to this new report which will be referred to by us, and the media, years to come.

We believe that the industry's efforts have had a measurable impact on reducing global warming since 1990. If it is of any consolation, the floods around Britain, Italy, Central America, Africa and Asia would have been a lot worse without all your hard work.

Sold at Newark

NOT much is known about the sculptor of this marble angel, James Nesfield Forsyth, save that he carved effigies to various clerics including Bishop Fraser, Manchester Cathedral in 1885, and Dean Elliot in Bristol Cathedral in 1891.

The angel had been left stranded in the crypt of All Saints, Ecclesall, near Sheffield. It had been made in memory of George Wilson, d1885, of Banner Cross Hall (now home to Henry Boot plc) and given to the church by his wife Clara Maria Wilson.

Derek Davies bought the angel from the church after he had been asked to buy the pulpit. It had been stranded in the crypt. With great difficulty he managed to manoeuvre it onto a pallet which he gingerly towed up a make-shift ramp.

Having failed to seek serious interest from top end ecclesiastical dealers, Derek, who is a Newark regular, decided to sell it there this summer.

He took it along with his regular stock, but had not even off-loaded it onto his stand when a Dutchman offered him an acceptable price by torchlight and the deal was done.

He was happy with the price. "Davies will be smiling for a month," he said, "which makes



Above: Life size carved marble angel sold at Newark in the summer by Derek Davies

up for the heart attack I nearly had trying to extricate the thing from the crypt. By the way, it is a beautiful piece of carving."

Which goes to show that, despite the invective and uncertainty, Newark can still be a place where straightforward dealing in absolutely legitimate high-value items, by known sculptors and with a full provenance, can still be done.

Derek Davies 01341 281330

AU TEMPS PERDU

PETE Chapman has now sold his Stapleton Road, Bristol, premises and has 'bags of stuff' that he would like to clear. A load of items will be on his web site at some point in the near-ish future, but if anyone would like to talk turkey now, please phone him. Tel 0117 929 9143. Web site www.salvo.co.uk/dealers/au-temps-perdu

BBR AUCTIONS

BBR auctions in Elsecar, South Yorkshire, have postponed their Sunday 19th November advertising auction due to the introduction of digital photography. 'This actually slowed us down considerably,' Alan Blakeman said. BBR have been known for some years in the trade as the only auction house that has a photo of every single lot in their catalogues. Now they are all in colour, too. The auction has been rescheduled for Sunday 4th February and will be, they say, the best ever. Tel 01226 745156

CLIGNANCOURT

SOMERSET dealer John Robbins visited Clignancourt on the 13th October and found himself in the middle of the Dernière Fête du Millenaire (last festival of the millenium) to which Salvo had been kindly invited by Marc Maison the founder of the Association Defense et Promotion des Puces de Paris Saint Ouen which was set up to prevent the market's redevelopment by the local commune (see SNs 1995 Steinitz).

JR reported fantastic sandwiches and plenty of champagne, complete with real grass carpets laid around the many byways of the largest fleamarket in the world. "It took me a while to realise that I was in a festival," Mr Robbins said, "everyone was very festive and drinking champagne early in the morning. I just thought that was normal. I bought six stone columns for a client and liked the look of some of the fireplaces, left at lunchtime and promptly got stuck in a huge jam on the peripherique." And any problems with the language barrier, we asked? "No. I just shout louder in English," he said.

More at www.parispuces.com

NevWATCH

AFTER storming Harrogate, Neville Griffiths headed down to the Great Antiques Fair at Earls Court where he was the official media spokesperson for the show, organised by Clarion Events, new owners of the Olympia Antique Fairs. As usual he was battling for the trade and Salvo (for which thanks—ed) and gave a number of talks during the show

TJ RECYCLED

TIM Pickthall sent us a flyer about his business in Bromley, Kent. "I read that Builders Surplus sent you a mailshot, so I did likewise," he said. The flyer shows reclaimed timber beams and old plastic (polyethylene??) bottles being reused and recycled as street furniture including seats, bollards, bike racks and planters. Tel 020 8464 2602. Web www.tjrecycledmaterials.co.uk

NO HOLD STOCK

SYLVIA Holdstock of Luton, Bedfordshire, has changed from S & J Acquisitions to Find Me Another, specialising in sourcing props for film and studio hire (and see letters p2). Tel 01582 415834. Web www.findmeanother.co.uk

MARKHAM'S

ALAN Rix of Markhams Architectural Salvage (listed in Salvo for two years) in Harlington, Beds, died two years ago, but daughters Aimi and Lucy Rix have taken over. Tel 01525 876428
Info S Holdstock

REAL CRABBERS

RONNIE Wootton told us that the boat seen with him in the photo (SN207) was a real 1932 larch on oak Cornish Crabber. "It was not 'repro'. I bought it as scrap, and another three, all sinkers, on a trip round Cornwall. The locals thought I was mad when I chainsawed the bow off," he said, "but what is an oddity to one man is crystal clear to another." Not Dickens, but Trooper 23141949 Wootton 13th/18th Hussars QMO Light Brigade. Roaming further afield recently he narrowly escaped death by buying three bottles of beer, but that, as they say, is another story

NEWS

Steph branches out



Above: Stephanie Harris of ATC (Monmouthshire) Ltd

[photo Monmouthshire Beacon]

ATC Ltd are dealers and contractors of reclaimed, and new native hardwood, flooring based in Monmouth, Gwent (Wales) run by Stephanie Harris.

In June she started an offshoot called 'Cabin in the Sky', spun off the building of play structures, to start building treehouses on a commercial basis.

Being the sort of person she is, she immersed herself in the subject, met up with some UK treehouse gurus and ended up at the World Treehouse Association conference held at Takilma in Oregon on October 22nd.

The six treehouses she has built all feature reclaimed wood mainly for internal pine cladding, and her photo album caused a stir amongst the treehouse glitterati—the likes of Michael Garnier, who organised the US conference and has been building treehouses in Oregon since 1990, and Paul Nelson, an author on all things treehouse.

These treehouses are not simply platforms for kids, they are serious structures with bathrooms, kitchens, wood-burning stoves, TV's, stereo's, legal problems, planning problems, burglars and so on.

Whilst she is not giving up reclaimed flooring, her bread and butter, she is quietly optimistic about the treehouse business.

Tel Steph Harris at ATC on 01600 713036.
See Michael Garnier's Oregon web site at: www.treehouses.com



Above: Garnier treehouse



Above: Seen in Oregon in October, an old barrel hammock, made by stringing together the disassembled staves (see next page for old barrel hoop lights), drilled through their thickness, with wire(?) ropes. Ms Harris says it was jolly comfortable.

Right: One of Michael Garnier's treehouses, this one a traditional simple platform, is 60ft up. Steph said, "My first lesson in treehouses at the conference was how to rope climb up the tree. We also worked on the roots of this tree to help it last longer—it was quite sick!" Part of the skill of erecting treehouses is doing it in a way that minimises risk of damage to the tree.

BOOK REVIEW

Book: Salvage Style

THERE is no doubt that the authors of *Salvage Style*, a coffee table DIY inspirational colour glossy, are passionate self-confessed salvage junkies.

In the introduction, important practical points are raised by Moira and Nicholas Hankinson: *What should be done with the over-sized oak beam that looked so perfect back in the demolition yard? Should it be incorporated structurally or cosmetically? Should it be used at all? ... One of the aims of this book is to offer inspiration, and perhaps even some answers, as well as to pass on our enormous enthusiasm ... It is important ecologically to reuse materials, and we hope to stimulate thoughts and ideas of your own.*

It would be disingenuous to be too hard on this book. It is groundbreaking (there are no others like it that we know of), it is practical (it contains 30 step-by-step projects), it does promote the reuse of salvage (lots of it, and a supplier directory), and it is certainly inspirational.

The format of the book is clear, it is well illustrated throughout with nice photos, and the print quality is good.

Overall, the authors must be congratulated for having the gumption to get this book into print.

It would be hard not to find a favourite or two from the thirty projects on offer. We especially liked the sea defence table and a strawberry hill gothic iron window mirror.

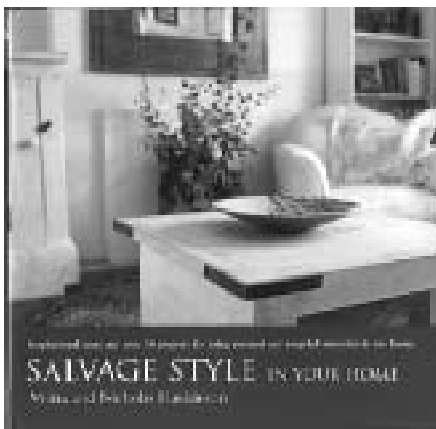
Cuprinol have sponsored *Salvage Style*, and some would say that perhaps this is where the eco-friendly ethics drift slightly. All salvaged wood should be treated before reuse, says the book, and Cuprinol produce a range of effective wood treatment. I would disagree.

Another mild criticism is that one of the founding principals upon which the reclamation industry has been built—that of reversible fixings—is not explicitly stated or adhered to. Glues are used when a mechanical fixing would do.

Oh, and what was the answer to the old oak beams conundrum? None, as far as I could see. The only oak beam featured in the book is a green oak bressemer—could be asking for trouble I hear a few of you say. The one place where reclaimed would have made absolute sense and it wasn't.

Arguably, our criticisms could be considered professional jealousy that in eight years we have failed to put our money where our mouth is, and get a book like this published ourselves!

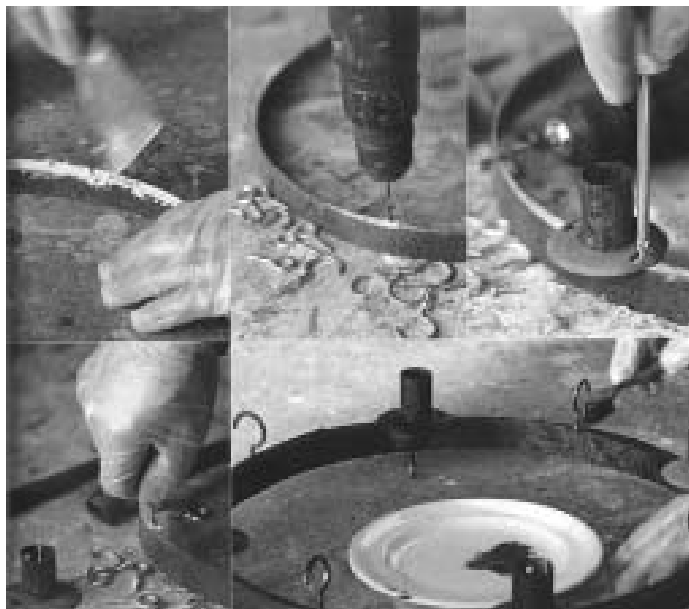
Buy it for Christmas. Salvage Style In Your Home by Moira & Nicholas Hankinson. Publishers Kyle Cathie Ltd. Tel 020 7692 7215. ISBN 1856263746. £19.99. 143pp. (Due out next year, again by the Hankinsons—Salvage Style In Your Garden)



So what do you do with those old barrel hoops? Make a candelabrum, of course!

Above: The completed barrel hoop candelabrum (or chandelier as it is called in the book).

Below: Two concentric hoops are joined together using two part wood filler, four candleholders (these ones were old mophead connectors) are screwed into the filler, along with cuphooks and chain, paint with black satin stove paint, fix to the joists not the ceiling plaster, and—presto.

**WEMBERLEY**

DISPOSAL of bits of the old Wembley stadium focused on bits of turf and plastic seats, signed by luminaries like George Best and Martin Peters, not forgetting the electric groundsman's milk float, all on the qxl.com web site. The old low level turnstiles failed to get away at £200

www.qxl.com

GLASS WANT

MRS EDMONDS needs a pane of irregular pomegranate small 'Flemish' glass 13ins by 9ins. Tel 0161 928 4233

SALVO MOVES

SALVO has moved office from Ford Village to: PO BOX 333, CORNHILL-ON-TWEED TD12 4YJ Northumberland Please amend your records, and sorry for any inconvenience. The phone and fax numbers remain the same. Tel 01890 820333 Fax 01890 820499

WASHINGTON DC

THE following businesses have booked for Washington DC at R&R2001 in January:

Andy Thornton
Dublin Arch. (Ireland)
English Antiques (USA)
English Garden
John Hardman Studio
MDS

Symonds Salvage

The Cast Iron Co

The Original

Oxford Architectural

Uniquities (Canada)

Westland & Co

Please call us NOW if you still want to book a display board (£350 plus VAT) Tel 01890 820333

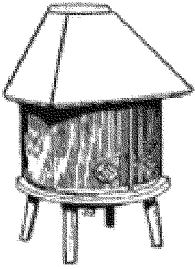
SECURITY

WE were called by a subscriber responsible for security in Britain's biggest heritage property group who suggested that dealers worried about their yard's security (SN207 letters) could try remote manned video surveillance and recommended Remas in Birmingham. Tel David Trimmer or Mike Paul 0121 550 8847 (also see last par. p7)

TEMPLE REC

ANDREW Gibbs runs Temple Reclamation (not masonic, but in Temple Street, Coventry) selling architectural and garden antiques and reclaimed building materials. Tel 01788 547353

SalvoSEARCH: JOTUL No 6



A CLIENT is seeking a Jotul No6 woodburning stove. Contact Hazel Matravers if you do. Tel 01890 820333

HANDYSIDE

ALISTAIR Handyside, the great grandson of the great Andrew Handyside, the 19thC ironfounder, would like to buy an original post box, fountain and urn made by the company. He never believed his father when he was told as a youngster that most pillar boxes in London had his name on it. He thinks the company went bankrupt in the early 20thC and the family moved to the USA. Incidentally, he was effusive about Stonescape and Coventry Demo. "Unlike many we tried who said they had plenty of York stone but didn't, Stonescape said they had and did—not only that but they offered digital images—and Coventry Demo had a brilliant selection of bricks," he said. Contact Alistair Handyside or Lorna Bailey 01908 543800

HILARY'S CURTAINS

HILARY Kristensen is a Northumbrian sheep farmer (and SN subscriber) who makes curtains mail order using customer's old fabric or new. Although most farmers can still afford new 4x4's every year, things are desperate for the upland hill sheep people, hence the second job for her, and husband—who this year has taken a full time job in a local nursery. Although they still run the 120 acre farm they also do farmhouse B&B too. Tel 01434 673562

WHITAKER RIDES AGAIN

GEOFF Whitaker, who started Newark Fair and sold it to DMG in 1993, has now fulfilled the terms of the contract and is to run fairs again, starting at Stoneleigh next April

NEWS

Reclaimed bricks on the

A SEARCH on the web for reclaimed bricks using **excite.com**, **altavista.com** and **aol.com**, turned up about forty pages, of which thirty were dealers, and twenty of those SalvoWEB links.

We wanted to see if batches of individual bricks could be bought via the internet.

On **salvoweb.com**, a search for dealers in reclaimed bricks resulted in 42 dealers found in 8 countries. This is less than the true number listed, since our text search checks for the words bricks within a dealer's text entry in our online directory, and many dealers have none. A search for specific brick stocks on SalvoWEB resulted in three entries in England and one in Northern Ireland.

There were no ads for bricks on **builders-surplus.co.uk**, the Exchange & Mart site **ixm.com**, nor auction lots in **ebay.co.uk**, **amazon.co.uk**, nor **qxl.com**. The BRE materials exchange does not list bricks, and cannot search for them, but 'brick hardcore and 9,000 calcium silicate bricks are

listed 'forever' under 'Masonry' (sic). US based **architecturals.net** had none, but UK **arcsal.com** did (to its credit), although it went slightly mad when the category 'bricks' was clicked on and offered 320 lots of advertising signs, panelling and furniture. We did at least find Wellington Bricks at £520 per 1,000 and White Candy's at £560 per 1,000. There may be more.

The best site seems to be **loot.co.uk**, where found: Accrington Bricks (no price or size), Alpine Rec for bricks from £255, Diamond Pavers at £200 for 150, free bricks in Manchester and elsewhere, Class B at £207 for 900, yellow stocks at £180, Brighton Reds at £20 for 140, Cheshire wire cuts at £150, Glass Bricks at £2 ea, 3inch reclaimed at £250, and reclaimed London Stocks at £250 for 250.

Next time: Basins on the web

THEFT RECOVERY

Adam-style fireplace recovered



THE marble fireplace reported in *SalvoNEWS 206* by Avon & Somerset Police as being stolen from Bath, Somerset, England on 26 September 1999, has now been recovered.

PLEASE NOTE: All recoveries appear at <http://salvo.theft-alerts.com>

Avon & Somerset Police Theft Alerts recoveries appear at <http://avsom.police.theft-alerts.com>

Prison doors as art

RITA Duffy's work is a personal attempt to make sense of the cultural and social history of Northern Ireland.

This installation came about when the architect refurbishing the disused women's prison in Armagh asked for opinion about a number of small anomalous spaces.

She was so struck by the iron-clad prison doors with their peepholes, that she asked if she could borrow six of them.

They form a hexagon, stood on salt, representing dried tears, and peeping through the peephole the internal space is decorated with glass beads. A chance coincidence could allow a glimpse of someone's eyeball in the opposite door's peephole. This seemed relevant to Ms Duffy.

In the gallery hang a number of small fragmented paintings of women washing. "I wanted it to be about internal grief ... that has to do with the sense that the peace process depends on the fact that there was no victory for anyone. This creates its own difficulties ... why did someone they loved have to die? A lot of people have been damaged mentally by what happened who aren't even aware of it."

"I was apprehensive about the reactions," she said. "One man simply said that his sister had learned to crochet in Armagh prison. On the whole I find that people are astute enough not to read it on one level ... to see that it repre-



Above: Doors from the Armagh women's prison in a Belfast gallery

sents imprisonment, release and grief in a wider metaphoric sense. This is a good sign, something that would not have been possible five years ago. I could not have made a piece like this then."

Veil by Rita Duffy is at the Belfast Old Museum Arts Centre until next Saturday 11th Nov

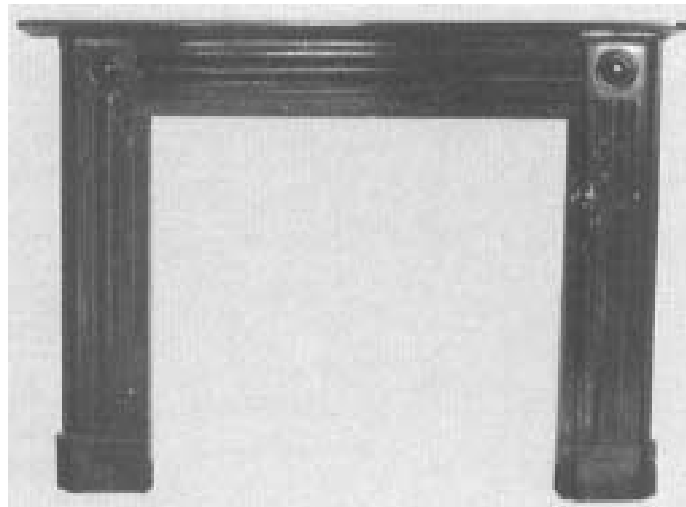
Irish Times

NEWS

Bonhams Manchester: 28th September 2000, top five results*All prices include Buyer's Premium of 15 per cent*

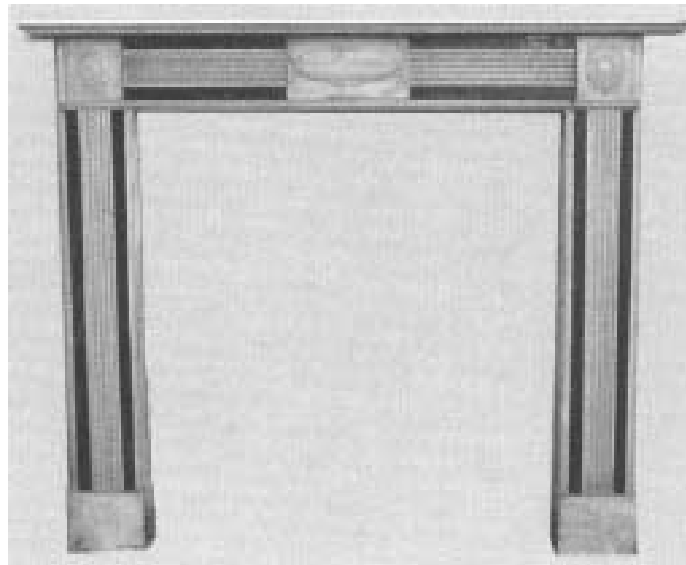
Above: TOP LOT: Italian white marble figure of Mercury, c1870, with winged helmet, caduceus and a book, 48ins high. Sold £4,600 (est £4k-£5k) to a UK private via an internet commission bid, consigned from England

Below: 2nd HIGHEST: A pair of naturalistic lead cocks, mid 19th century, basket of fruit on the base, 28ins high, on composition stone plinths. Sold £4,600 (est £2k-£3k) to UK trade with a trade underbidder



Above: Third highest: A pair of Regency reed and roundel black fossil marble chimneypieces, 72ins wide by 52ins high. Sold £3,680 (est £3k-£4k) to English trade with a trade underbidder

Below: Fourth highest: A pair of Regency-style early to mid 20th century white marble chimneypieces, reeded jambs and frieze with verde antico slips, paterae end blocks and urn tablet, 52ins wide by 42ins high. Sold £3,220 (est £1.5k-£2k) to English trade



Above: Fifth Highest: George III-style brass and cast iron grate by Thomas Elsley, late 19th century, arched back plate with urn relief and fretted brass serpentine apron flanked by urn finialled tapering supports, 35ins wide. Sold £2,760 (est £1.5k-£2k) to English trade, privately underbid and consigned by a local private

NFU MUTUAL

INVALUABLE (Nov00) repeated NFU Mutual's assertion, that thieves were increasingly targeting garden ornaments and statues. This, we discovered last summer, was based on 'the anecdotal evidence of the police' according to the NFU press officer. Police antiques officers and security experts we asked say that the theft of statues has fallen compared to three year's ago, although there has been an increase in the theft of much lower value objects that are hard to identify like saddles and troughs. Have the NFU increased premiums on the strength of anecdotes? And would this contravene the ABI's code of practice? At least Invaluable did not repeat the NFU's comment about the 'Charlie Dimmock factor', aired in the national press during the summer

TheBurglar.com

CREATING a frisson of excitement in security circles is a new web site registered in Copenhagen by rentasoldier.com which offers to try to get victims of theft their goods back, if they or their insurers pay a reward. Rentasoldier is registered in the name of a Jan Petersen (coincidentally the name of both the new Norwegian president of the European People's Party, and the author of the seminal work on Viking Swords in 1919). The press say that the site is hosted by Bell South in the USA, but we think it is hosted by Light Hosts, who are connected to a web business called Pysmatic, whose owners are sponsors of the global XFree86 computer operating systems project. Pysmatic has a new UK domain, pysmatic.co.uk which appears to be hosted in the US (not very likely—ed). Lawyers and police in the UK have discounted the theburglar.com site which they say is on the wrong side of the law but admit that, due to the vagaries of the internet, they may be wrong. Incidentally, Rentasoldier has some interesting links, one of which is to a DIY remote video system for sale at thespys.com

by CyberSnoop

❖ THEFT ALERTS ❖ THEFT ALERTS ❖ THEFT ALERTS ❖

BUCKINGHAMSHIRE



Stolen from Aylesbury, Buckinghamshire, England on 13 October 2000

Description: Victorian lead figure of Mercury after Giambologna, god with winged helmet and heels standing on a sphere attached to a square composition stone base, holding a caduceus, late 19th century; approx 63ins high

Any info to: Amersham Police Station, Thames Valley Police. Tel 01494 736736.

Crime Ref Number: GJ 1234690-00

Reg date: 18/10/2000
No: 2081
Status: fp50
Source: salvo

LONDON



Stolen from North London, England on 30 October 2000

Description: 3no wrought iron GATES (one shown in photo left is similar)

Any info to: Crime Desk Tottenham Police Station. Tel 020 8345 0735

Crime Ref Number: YR2830104/00B

Reg date: 1/11/2000
No: 2082
Status: fp100
Source: SALVO

AVON & SOMERSET POLICE

Stolen from Weston Super Mare, Somerset, England on 23 August 2000

Description: Black marble FIREPLACE with tiles on sides & under mantlepiece of pink / purple on cream flower design. cast iron insert arched top with rope twist design. approx 5 ft. x 5 ft. gilt leaf decoration on side pillars with mottled pink / red marble panel on each pillar, scroll decoration below mantle piece & stepped base at bottom of each pillar
Any info to: Antiques desk, Avon & Somerset Police. Tel: 01275 816730

Crime Ref Number: 8672

Reg date: 19/10/2000 No: 8672 Status: avsom.police
Source: AVON AND SOMERSET POLICE

All theft alerts appear at <http://salvo.theft-alerts.com>
Avon & Somerset Police Theft Alerts appear at <http://avsom.police.theft-alerts.com>

wanted

antique BATHROOMS

POSH TUBS urgently require old and interesting bathroom ware. Roll top baths, canopy baths, plunger bath taps, WC pans, basins, old wooden toilet seats, high level cisterns, ornate brackets etc. Tel (Kent) 01233 850155 UKT

antique BRASSWARE

DOOR KNOBS, LOCKS, WINDOW fittings etc. wanted. Will remove. Tel Nick Marchant (Bristol) 0117 986 5182 or mobile 0585 273083 UKT66

antique CAST IRON

CAST IRON RADIATORS with feet. Cash waiting. Coventry area. Tel 024 7663 9338. Email rbs@btinternet.com (if emailing pictures please send jpeg files of less than 100Kb) UKT

antique GLASS

SALVO PATTERN GLASS ARCHIVE. 1900-1970 embossed pattern glass, clear or coloured. Send a 'rubbing' to Salvo. Give quantity, and approx pane sizes.

WANTED: OLD GLASSHOUSE, 10m-15m long by 3m-5m wide by 3m-4m high, anywhere and in any condition. Tel Bart Marichael (Belgium) 0032 9282 2097 fax 0032 9282 9175 BT29

antique WOOD

ECCLIASTICAL INTERIORS - Large or small, complete or part, especially good pitch pine & oak. Contact Nick Alpe at Pew Corner (Surrey) 01483 533337 FAX 01483 535554 UKT

CHURCH SPECIALIST requires pews, pulpits, balustrading, choir fronts, altars, rails, screens - all areas. Also has surplus timbers for sale. Contact Barry Chilton (Lancs) Tel/FAX 01257 273095 UKT25/25

antique WROUGHT IRON

WANTED: DECORATIVE WROUGHT iron window balconies, balconettes, and French door balconies. Please contact Mark McDonagh (Dublin) +353 87 293 3694 or Fax +353 1 672 7435 IRT

retro METAL

OLD METAL PEDESTAL DESKS wanted. Tel Source 01225 469200 UKT8/25f

reclaimed BEAMS

OLD OAK BEAMS & BARN FRAMES. Antique Buildings (Surrey) 01483 200477 UKT

reclaimed BRICKS & PAVERS

HANDMADE BRICKS, reclaimed, large quantity, 50,000 plus. Tel Romsey Reclamation (Hampshire) 01794 524174 UKT

HANDMADE bricks, 2in-2 1/2in, orange red. Antique Buildings (Surrey) 01483 200477 UKT

OLD 2in BRICK PAVERS. Contact Robert Grimmond at Woodlands (Surrey) 01483 235536 UKT

300no RED CANT BRICKS. Any quantity considered. Contact David Codd on telephone (Warks) 01827 714637 UKP23

reclaimed FLOORING

OLD OAK Floorboard, min 7ins wide. Antique Buildings (Surrey) 01483 200477 UKT

DESPERATELY SEEKING panga panga woodblock and 3 1/2ins wide English oak strip. Top prices paid. Contact Declan Molloy, Victorian Wood Works, (London) Tel 020 8534 1000 FAX 020 8534 2000 UKT

RECLAIMED PINE FLOORBOARDS, maple strip and roof boards. Large quantities of good sized joists. Woodblock. Anything considered. Phone Damian Cronin (London) 0385 288544 UKT

15ins to 20ins PITCH PINE floorboards, 3/4ins thick, as clean as possible. Any quantity. Tel (Devon) 01884 821366 UKP23

WANTED: FOR TWO ROOMS of a period house 108sqm (54sqm for each room), pine or oak floorboards, must have a reasonable patina. Tel Robert Aagard 01423 770385 or fax 01423 770714 UKT13

reclaimed RAILWAY SLEEPERS

WANTED RECLAIMED RAILWAY sleepers, hardwood or softwood. Can purchase in quantities of 10,000 at a time. Must be of good quality. Romsey Reclamation (Hampshire) Tel 01794 524174 (international +44 1794 524174) or FAX 01794 514344 (international +44 1794 514344) UKT

reclaimed ROOF TILES

ORANGE RED PEG and nib tiles 10 1/2 by 6 1/2 Antique Buildings (Surrey) 01483 200477 UKT

LARGE QUANTITIES of Double Roman Tiles from anywhere in the country, any colour considered. Please phone Elmtree Reclamation (Wilts) 01373 826486 UKT

RECLAIMED STONE ROOF TILES wanted; Welsh, South Herefordshire quality. Large quantity up to 170 sqm. Tel/FAX 01873 860317 or (evenings only) 01225 333439 UKT

T

for sale

COLOUR PHOTO ADS stay on SalvoWEB www.salvoweb.com/photoads until sold, and are repeated twice in SalvoNEWS. They cost £50 (plus VAT).

antique GLASS WINDOWS

LEADED GLASS WINDOWS always in stock. One of the largest selections of coloured leaded glass windows in the North of England. Prices range from £9 to £1000. E-mail pictures can be sent worldwide. Please contact Bingley Antiques, Springfield Farm Estate, Flappit, Haworth, West Yorkshire BD21 5PT. Tel: 01535 646666 or E-mail john@bingley-antiques.co.uk. NB Closed Sundays and Mondays UKT

OBSOLETE GLASS ARCHIVE. 1900-1970 embossed & pattern glass, plain and coloured, held by UK dealers. Fax a 'rubbing' of your requirement to Salvo (Northumberland) FAX 01890 820499

LARGE STONE ROUND window, 8ft diameter complete with original leaded stained glass. R&R (Cheshire) 01270 811310 FAX 01270 812466 UKT



antique KITCHENS

1950's PAUL ALUMINIUM KITCHENS. Polished aluminium kitchen base units and wall cupboard units. Price: £275 per door unit. Please contact: Source (Somerset, UK). Tel 01225 469200. Email shop@source-antiques.co.uk UKT22

ENGLISH ROSE ALUMINIUM KITCHENS: 'English Rose' polished aluminium fifties retro kitchen base units and wall cupboards. Price: £275 per door unit. Please contact: Source (Somerset, UK) Tel 01225 469200. Email shop@source-antiques.co.uk UKT22

ENGLISH CORNICE & DENTIL COURSE: Hollow cast terracotta. Cornice: Length 23ft, returns 3ft 6ins, 4no corner sections, 13no front sections. Dentil course: Centre sections bowed for a bay window, 2no corner sections, 15no front sections (4no sections broken, no pieces missing). WINDOW MULLIONS & BAND COURSE: To accommodate bay window 72ins high, 2no 21ins wide, 1no 47ins wide. Mullions: 12no centre sections (having three face edges, the forward face bevelled), 12no side sections (having two face edges). Band course: frontage 19ft 6ins long, returns 9ins wide, 2no corner sections, 15no front sections. Price: Cornice and dentil course: £650 Window mullions and band course: £450 Please contact: Mr Andrew Lewis (Middx, UK). Tel 020 8805 3511


PHOTO-ADS

£50 plus VAT

Telephone 01890 820333
Email hazel@salvoweb.com

2 insertions in SalvoNEWS and on SalvoWEB in colour until sold

Providing a natural answer



Well known as a leading supplier of most materials, Coleman Roofing Supplies also carries one of the largest ranges of reclaimed tiles and slates in the UK. Low wastage of the surplus material to create these products, reclaimed materials often look less well installed than the modern equivalent.

The Coleman team creates over a million items, many no longer available elsewhere. All are individually inspected and graded according to weathering and quality, providing the natural answer to most restoration.

Coleman Roofing Supplies

COLEMAN ROAD, THE BRICKS, B25 8JH, TEL: (0121) 220195.
 BRADFORD, TEL: (0113) 717758, Fax: (0113) 717740.
 PORTSMOUTH, TEL: (01705) 530213, Fax: (01705) 535645.
 LEAFSHIREHEAD, TEL: (01272) 391600, Fax: (01272) 392747.

DORSET RECLAMATION

BERE REGIS, NEAR POOLE

MELLOW OLD RED BRICKS
 WEATHERED CLAY TILES
 & WELSH SLATE

FLAGSTONES, QUARRY TILES
 & STABLE PAVERS

OLD ENGLISH OAK, ELM
 & PINE BEAMS

FLOORING & DOORS

PERIOD PORCELAIN BASINS
 & CAST IRON BATHS

MARBLE FIREPLACES

DECORATIVE ARCHITECTURAL
 & GARDEN ANTIQUES

DELIVERY ARRANGED

TEL 01929 472200
 FAX 01929 472292

THE RECLAMATION CENTRE

Our stock consists of timber, all sizes, cast fire inserts, fire surrounds, wood and marble, flagstones, oak and pine panelling, chimney pots, weathered bricks, cast column rods, pavers, cobbles, roll top baths, Victorian basins, small ranges, spindles, roof tiles and many more architectural and period building materials too numerous to mention.

Opening hours
 Mon - Fri 8.30am - 5.00pm
 Sat 9.00am - 4.30pm

ACE DEMOLITION & SALVAGE

tel: 01202 579222
 Heathercroft, Barrack Road
 West Parley, FERNDOWN
 Dorset BH22 8UB

SALVO TELEPHONE

01890 820333

SalvoNEWS SUBSCRIPTIONS

UK £50 France 600 F
 Ireland £160 Europe £60
 USA & Canada £75 World £80

Rate for 25 issues of SalvoNEWS including any SALVO magazines

Overseas Subscribers
 Each issue's advertised auctions, photo-ads, and demolition alerts are placed on the web at www.salvoweb.com

DISPLAY ADVERTISING RATES

Sixteenth page.....£30
 44mm wide by 63mm high

Eighth page£55
 92mm wide by 63mm high

Quarter page£90
 92mm wide by 133mm high

Half page£155
 192mm wide by 133mm high or
 92mm wide by 275mm high

Full page £260
 192mm wide by 275mm high

Series discounts - 6 less 10%; 12 less 25%; 24 less 35%

CLASSIFIED TEXT ADS

Three consecutive insertions of text ads in any classified category, for 25 words. Additional words cost 25p each. Bold text is twice the price of plain text.

Subscribers..... £15 for 25 words
 Non subscribers..... £30 for 25 words

Continuous run £5 per insert

PHOTO AD UNIQUE ANTIQUE

Photo Ad in two consecutive editions of SalvoNEWS, and on SalvoWEB until the item is sold. For unique individual items

Subscribers £50 one-off

PHOTO AD REPRODUCTION

Photo Ad in two consecutive editions of SalvoNEWS, and on SalvoWEB for one year. For reproduction and repeatable antique items

Subscribers £50 per year

PHOTO AD DEMOLITION ALERT

Photo ad in two consecutive editions of SalvoNEWS, and on the "Demolition Alerts" page of SalvoWEB.

Up to 5 categories of items £50
 10 categories of items £100

Salvo World Online Directory

Entry in Salvo World Online Directory
 Full listing £11.75 annually
 (free to Salvo Code dealers and SalvoNEWS subscribers and sole-trading craftspeople)

SalvoWEB Pages

Colour logo, location plan, written details, photo of stock or premises, indexing with search engines, email link, and web site link.

Set up charge £120
 (Salvo Code dealers £60)
 Annual rental £30
 Text change £10
 Photo change £20
 Re-register (15 search engines) £25

SalvoWEB Dealer Link Page

A web site link to "Dealer Links" page
 Annual rental £20
 (free for SalvoWEB page holders and Salvo Code dealers)

VALUE ADDED TAX


- 1) NO VAT is payable on subscriptions
- 2) ALL advertising is subject to VAT for UK subscribers.
- 3) European advertisers must supply a VAT number if they do not wish to pay VAT.
- 4) Advertisers outside Europe do not pay VAT.

SALVO
 PO BOX 333
 CORNHILL ON TWEED TD12 4YJ
 ENGLAND

ARCHITECTURAL ANTIQUES

THE LARGEST STOCK IN THE UK

One of the longest established companies in our field with over 20 years in salvage.



OPEN 7 DAYS A WEEK
 4 minutes from M62 (J24)

Andy Thornton Architectural Antiques Ltd
 Victoria Mills, Stainland Road, Greetland
 Halifax, West Yorkshire HX4 8AD
Tel: 01422 377314
Fax: 01422 310372
 e-mail: antiques@ataa.co.uk
 Web site: www.ataa.co.uk

Minchinhampton Architectural Salvage

Suppliers of

Architectural Salvage,
 Fireplaces, Flooring,
 Timber, Railings & Gates,
 Baths, Sinks & Taps,
 Garden Ornaments,
 Bricks, Quarries & Pavers,
 Slates, Tiles & Ridge,
 Fountains, Ponds & Spouts
and much more!

New Catbrain, Cirencester Road,
 ASTON DOWN, Nr Minchinhampton,
 Stroud, Glos

tel: 01285 760836
 web www.catbrain.com • email masco@catbrain.com

Victorian Wood Works

SAWYERS, MANUFACTURERS AND CONTRACTORS

RECLAIMED OR NEW
 OAK, ELM, JARRAH, PITCH PINE BEAMS
 SAWN & SELECTED TO CLIENTS' NEEDS

SPECIALIST SUPPLIERS OF RECLAIMED


WOOD FLOORS

VERSAILLE PANELS & INLAID PARQUETRY
 Hand made - Hand finished - Old Patinas
 Full time floorlayers - Worldwide Contracts

FINEST QUALITY HANDCRAFTED JOINERY

HEAD OFFICE
 International House,
 London International Freight Terminal, Temple Mill Lane,
 Stratford, LONDON E15 2ES

Tel: 020 8534 1000
 Fax 020 8534 2000



POSH TUBS

ORIGINAL FRENCH & ENGLISH
 ROLL-TOP BATHS, BASINS, SHOWERS,
 TAPS, W.C.S, CISTERNS ETC.

MORIARTIS WORKSHOP
 HIGH HALDEN
 TENTERDEN
 KENT
 TN26 3LZ

LARGE SHOWROOM OPEN 6 DAYS
 OVER 100 BATHS IN STOCK!

TEL: 01233 850155

WESTLAND & Co

Wanted . . .

Stone Fireplaces
 Unusual & Gothic
 Architectural Items

Please telephone

020 7739 8094

HARDWOOD

Railway Sleepers

GOOD QUALITY
 GOOD PRICE

Prompt attention at all times
 Delivery price on asking
 Vast stock available

ROMSEY

Ph: 0044 1794 524174
 FAX: 01794 514344

Mask Chudley

International Shipping

Specialists in packing
and shipping
Architectural antiques
Worldwide

Tel: 01460 62800
Fax: 01460 63500

The Old Station, Great Western Road
Chard, Somerset, TA20 1EQ

FROME RECLAMATION

Station Approach, FROME, Somerset

We buy and sell
traditional building materials

Floorboards, Bricks, Tiles, Slates,
Flagstones, Architectural Items, Period
Fireplaces, Doors, Bathrooms, Radiators,
Gates, Garden Statuary, Staddlestones,
Troughs and Urns

LARGEST GENUINE STOCKS
IN THE WEST COUNTRY

Open: MON-FRI 8.00am-5.30pm
SAT 8.00am-4.30pm

TEL: 01373 463919
TEL/FAX: 01373 453122
Mobile: 07836 277507

ARCHITECTURAL ANTIQUES

aa-fireplaces.co.uk

UUU

Over 300 Traditional French

Fireplaces
IN STOCK

Stone q Marble

Trade Terms

Tel: 020 8741 7883

Fax: 020 8741 1109

Antique & Heritage Pieces

UUU

351 King Street,
LONDON W6 9NH

Ribble Reclamation

Architectural Antiques
for Building & Garden Design

Granite & stone setts
Ornamental & walling stone
Old & new stone flooring
Cast ironwork
Oak beams & railway
sleepers

Chimney pots & roofing stone
Gateposts, heads & sills
Stone slab 6ft by 3ft

Constantly changing stock
2 mins from M6 Junction 31

The Brick House, Ducie Place, Preston PR1



Email joe@ribble-reclamation.com
Website www.ribble-reclamation.com

(evenings)

UP22

antique STONE

c1910 PORTICO & OAK DOUBLE DOORS A carved stone portico in the Beaux Arts style, moulded architrave, with a pair of columns with carved stiff leaf capitals, inner recessed architrave, with double oak panelled entrance doors with fanlight over. Above the portico is a header with scrolled brackets to each side, and the inscription "COUNTY EDUCATION OFFICE". Two steps to entrance, and a third to door. Overall size 13ft high by 10ft wide approx, opening 9ft high by 5ft wide. Doors 84ins high. Provenance: Norwich County Education Office. Price: £14,250 + VAT Please contact: Mengers Architectural (Norwich, UK). Tel 01953 851868 UKT22

17th CENTURY HAND CARVED stone balustrade from a Scottish castle. 14no R&R (Cheshire) 01270 811310 FAX 01270 81246 UK T

antique WOOD

VICTORIAN FURNITURE FROM LAW COURTS. Beautiful, carved oak desk, 5 rows of bench seating with carving to end panels, one of which includes writing slope. Length of carved oak panelling with writing slope. Panelled dock and witness box. Provenance: Reclaimed from a 19th century North Shields Law Court. Price on application. Tynemouth Architectural (Tyne & Wear, UK). Tel 0191 296 6070 UKT12

18th & 19th CENTURY STRIPPED PINE, ex-restorers, large and small pairs of cupboard doors, assorted interior shutters, fielded dado panels, 40no lengths of 5ins architrave average 7ft long. Tel (Lincs) 01724 798632 (eves) UKT15

reclaimed BEAMS

LARGE QUANTITIES of French Old Oak Beams for sale. Lists and cutting arranged. English spoken. (France) FAX 00 33 325 01 55 00 (mobile) 00 33 610 62 65 43. Fluent English FT

OAK BEAMS & OAK BOARDS. Good selection, all sizes. R & R (Cheshire) 01270 811310. FAX 01270 812466 UK T

OAK BEAMS, JOISTS, RAFTERS etc. Large stocks available. Also large quantity of early pit sawn joists, 3.8m to 5m lengths 8ins by 3ins, very competitive rates for large quantities. Tel Country Oak (West Sussex) 01273 833869 (mob) 0402 974418 UK T

reclaimed BRICKS

2in BRICKS. R & R (Cheshire) 01270 811310. FAX 01270 812466 UK T

reclaimed FLAGSTONES & SETTS

OLD LIMESTONE flagstones for sale. Any quantity. Resawn to any thickness on demand. (France) FAX 00 33 325 01 55 00. Tel mobile or 00 33 610 62 65 43. Fluent English FT

300yds RECLAIMED STONE FLAGS 3ins-4.5ins thick; large amount of 6ins and 12ins kerbs; also approx 300 tons of stone cobbles. Tel Walshs Rec Manchester 0161 789 8223/8271 UKT23

reclaimed FLOOR TILES

HEXAGONAL FLOOR TILES, terracotta 6"/in. R & R (Cheshire) 01270 811310. FAX 01270 812466 UK T

reclaimed FLOORING

18thc OAK FLOORBOARDS, Parquets de Versailles etc. See SalvoWEB Atelier de Bourge Ste Marie (France) for types available. Quotations. Fax 00 33 325 01 55 00. Tel mobile 00 33 610 62 65 43 and wait for recorded message. Fluent English FT

OAK BLOCK flooring. Contact Alpine Reclamation on (Surrey) 01306 711711 or mobile 0958 276745 UKT

ANTIQUO OAK BOARDS 27mm thick. 8in to 13in wide. Original floorboards, some with patina. Designers and architects look no further! Telephone Victorian Wood Works (London) 0181 534 1000 UKT

OAK FLOORBOARDS. Oak beams. Oak cut to cutting lists. Oak plank doors made to measure. Also pine and elm. Tel RBS Oak (Coventry) (01203) 639338 UKT24

LARGE STOCKS OF ANTIQUE OAK floorboards 6ins to 12ins wide. Tel Country Oak (West Sussex) 01273 833869 or (mobile) 0402 974418 UK T

YORKSHIRE RECLAIMED Flooring. Quality beams into quality T & G floorboards. Pitch pine, oak, pine and original flooring available. Also ledge and brace doors. Tel (yard) 01943 880180 (mobile) 0797 0476403 (eves) 01132 620375 UKT10

reclaimed ROOFING

3,000 KEYMER ARROWHEADS; dark handmade diamond tiles; double roman Poole type; bold rolled pantiles; triple roman. Contact Alpine Reclamation on (Surrey) 01306 711711 or mobile 0958 276745 UK T

CLAY HANDMADE TILES, valleys, ridge, bonnets; 15,500no clay Monopol Courtrais tiles, Phillips Patent Lockjaw (diamond) tiles, de Maas interlockers and double romans; 1000no blue black 90deg ridge with collars, from one job. Tel Walshs Rec Manchester 0161 789 8223/8271 UKT23

reclaimed STONE

VARIOUS TYPES OF RECLAIMED stone, hand picked flagstones, bricks, beams, flooring, made to measure traditional doors. Contact Environmental Reclamation South West (North Somerset) on 01275 333589 UKT1121

AGED ROCKERY STONE and boulders from 1/2 ton to 1 1/2 tons each. Large quantity available. Delivery arranged. Fax 01929 450423. Tel (Dorset) 01929 450241 UKP 44

mixed MATERIALS

FOR SALE: 1500no clay pantiles 35p per tile; 1no Scots pine beam, 117ft long by 6ins by 12ins, good condition £160; 2no Victorian cast iron warehouse pillars 8ft 5ins high £125ea. Tel (Lincs) 01205 460048 UKP23

demolition

DEMOLITION ALERTS

c1900 NORTHUMBERLAND SCHOOL DEMOLITION. Commencing in November 2000, large quantity of materials for which buyers are sought. Reclaimed materials and features include stone ashlar tabling, and walling stone, stone doorcases - BOYS

(1) and GIRLS, complete mullion window sets (2 & 3), pine four-panel doors and cupboard doors (4), Belfast sinks and taps (5), cast iron gutter, downpipes, radiators (6), and timber roof trusses, beams and joists. Prices: Call. Please contact: Stephen Redhead Farm & Plant Hire. Tel 01665 712952. (Large colour images on SalvoWEB) 20703UKT12

business

DEALERS

ADVERTISE YOUR BUSINESS HERE! £100 plus VAT a year for 25 words for SalvoNEWS subscribers. Call Hazel on 01890 820333, fax 01890 820499 or email hazel@salvoweb.com

J. & B. FRANCE. Tel 00 33 233 36 74 97 FAX 00 33 233 36 25 45 (France). For all your requirements; chimneypieces, furniture, decorative items, all building materials and French properties for sale FT

LANDMARK ARCHITECTURAL SALVAGE SERVICES LTD, Abbeydale Rd, Sheffield. Reclaimed timber, cast pillars, oak beams, pitch pine, slates etc bought and sold. Good range of architectural salvage. Tel 0114 255 5575 23UKT

replia repro

CAST IRON

EMBANKMENT CAST IRON SEATS. Wood slat seats with camel end supports cast from an original Victorian seat in the Embankment Gardens, London. POA. Please contact: The Cast Iron Company (Middlesex, UK). Tel 020 744 9992 UKT12

CAST IRON AIR BRICK: Victorian-style reproduction cast iron air bricks, approximately brick size. Other items also manufactured. Trade enquiries welcomed. (Replicas & Reproductions) Price: £10 ea Please contact: Wells Reclamation (Somerset, UK). Tel 01749 67087 20704UKT22

BEST OFFER SECURES!!! 200no approx Victorian style tileable register grates, complete with canopies, frets, fire baskets (not tiles), 38ins square, 16ins wide internal opening, finished in matt black heat resistant paint. ALSO: 300no Victorian style polished door stops (PORTERS), Punch & Judy, rampant lion etc. Tel Gary Young, The Cast Iron Company. Tel (Middx) 020

8744 9992 email castiron@btconnect.com 19303UKT22

REPLACEMENT SPARE PARTS for Cast Iron Fireplaces. Ash covers, frets, bars, hoods etc. Very large range of stock. Capital Fireplaces (Bedfordshire) Tel 01462 813138 UK T

COMPOSITION STONE

DRAGONSTONE. Manufacturers and suppliers to the trade of Antiqued reproduction statuary and garden ornaments. For further information please contact Hampshire Gardencraft Ltd, Rake Industries, Rake, Nr Petersfield, Hants GU31 5DR. Telephone 01730 895182. Fax 01730 893216. Email sales@hampshire-gardencraft.com Website www.hampshire-gardencraft.com UKT

WOOD

REVOLVING GOTHIC SUMMERHOUSE: sectional, transport and on-site assembly relatively easy, in most cases within a day, undercoated, ready to paint to the colour of your choice, surfaces which are to remain wood are treated with Danish oil, a natural and proven transparent finish. Registered Design No.2054368. Price: Call. Please contact: Source (Somerset, UK). Tel 01225 469200 22UKT

STONE

NEW NATURAL STONE flagstones imported from India. Fliven face antique look. Coursed 22ins or random. Trade and retail supplied. Contact Jason Ransford (Northants) 01327 705310 UK T

books

Antique BOOKS

PRE-1920 TRADE CATALOGUES wanted. Contact John Gall 01207 231811 or Fax 01207 290933 UKMuseum20dec00

SALVO publications

SALVO DEALER DIRECTORY all Britain - £60 100 pages A4 approx (£120 non-subscribers) Tel 01890 820333

SALVO DEALER DIRECTORY all France - £95 300 pages (approx) A5 with maps (£125 non-subscribers) Tel 01890 820333

ALL OLD CAST IRON RADIATORS heat output sheets. Price £80 (includes calcs for any radiator not in the guide). Tel 01890 820333

restorers

BATH RE-ENAMELING

BAKED-ON ENAMELLING SERVICE for Roll Top Baths. On-Site or Workshop Service. Posh Tubs (Kent) 01233 850155

services

INTERNET

SalvoWEB dealer web pages cost £120+VAT then £30 a year rental thereafter. Includes a photograph, text, location map, and search engine indexing. No computer necessary. Tel 01890 820333

INDIVIDUAL ITEMS For Sale or Wanted on SalvoWEB cost £50+VAT, includes two consecutive photo ads in SalvoNEWS. Call 01890 820333

LISTED BUILDINGS ADVICE

RENAISSANCE OFFER An Old-House survey anywhere in the UK for £180. Call for details and availability (Bath) 01225 314426

STAIRCASE EXPERT

STAIRCASE CONSULTANT. Expert witness. Chairman BS Committee etc. Reclamation-friendly. Paul Davies (Berks) Tel 01344 291034

TIMBER IDENTIFICATION

SALVO TIMBER ID - fast. £20 +vat for subscribers (or £30 +vat) Post sample six inches across the grain to Salvo

auctions

PHONE TO CHECK DATES

online catalogues are linked to www.salvoweb.

com/auctions a few days prior

sat 11 nov
Diss, Norfolk
Rural and domestic bygones
T W Gaze: Carl Willows 01379 650306 (UK)
online catalogue

tue 21 nov
Billingshurst, Sussex
Architectural and decorative
Sotheby's: Jackie Rees 01403 833560 (UK)

sat 25 nov
Koln, Germany
Technical antiques
Breker +49 221 38 70 49 (D)

sun 26 nov
Thornhill, Scotland
Dispersal sale of museum of rural life
Tradstocks 01786 850400 (UK)

sun 4 feb
Elsecar, South Yorkshire
Advertising
BBR 01226 745156 (UK)

antique fairs

PLEASE PHONE TO CHECK DATES

13-19 nov
Olympia, London
Antiques Fair
Clarion 020 7370 8188 (UK)

trade shows

PLEASE PHONE TO CHECK DATES

CONSERVATION

15-17 jan
Hilton, Washington DC
Restoration & Renovation 2001
EGI +1 978 664 6455 (USA)
*** Display boards on the Salvo stand ***

RECYCLING

28 nov - 1 dec
Everbright, Shanghai
Energy exhibition inc waste to energy
Worldwide +86 21 52340650 (China)

exhibitions

PLEASE PHONE TO CHECK DATES

SCULPTURE

until 31 dec
Hessisches Landesmuseum, Kassel
Medieval to neo-classical bronzes
+49 561 78460 (Germany)

useful addresses

ENGLAND

Ancient Monuments Society 0171 236 3934
British Assn of Parks & Piers 0171 383 7942
British Brick Society 01494 520299
British Irons & Laundry, 87 Wells Way, Bath BA2 4RW
Chapels Society 01986 798308
Church Monuments Society 01223 462279
CIEF 0171 222 8891
CIRIA 0171 222 8891
Civic Trust 0171 930 0914
Construction History Society 01344 23355
Coppice Association 01778 33470
Cottage Garden Society 01270 250776
CPRE 0171 976 6433
Crystal Palace Group Ctge Yd, Anerley Hill, SE19 2BA
Dovecot Society 10 The Carrs, Whitby YO21 1RR
Drystone Walling Association 0121 378 0493
Ecclesi Soc 10 Coronation Rd, Sheerness ME12 2QN
Forest Stewardship Council 01886 412176
Friends of Friendless Churches 0171 236 3934
Friends of the Earth 0171 566 1665
Friends of War Memorials 0181 205 1693
Garden History Society 01454 294888
Georgian Group 0171 387 1720
Historic Chapels Trust 0171 584 6072
Historic Churches Preservation Trust 01223 462279
Listed Property Owners Club 01795 844939
Nat Inv War Memorials Nick Hewitt tel 0171 416 5353
National Small Woods Association 01327 36387
Hastings Historical Society fax 0171 839 1379
Public Monument & Sculpture Assn 0171 485 0566
RCHME tel 01793 414600
SAVE tel 0171 228 3336
Save Parsonages Bulmer Hse, Sudbury CO10 7ED
SPAB tel 0171 377 1644
Strict Baptist So 38 Frenchs Ave, Dunstable LU6 1BH
Temple Trust 0181 992 2246
Theatres Trust 0171 836 8591
Tin Tab Soc 7a Lndn Rv, Newtone/Willows WA12 8RY
Twentieth Century Society 0171 250 3857
United Reformed Church Soc 86 Tavistock Pl WC1

Victorian Society 0181 994 1019
Village Lock-Up Assn 7 Inch Yd, Newbury RG14 5DP
WWF tel 01483 426444

SCOTLAND

Scottish Civic Trust tel 0141 221 1466
Scottish Garden History Society 01292 443246
Scottish Society for Conservation 0131 557 0019
Sc. Vern. Bldg Gp, Whitelodge, Fochabers IV32 7EB

IRELAND

Dublin Civic Trust c/o Ian Lumley, tel 01 873 4964.
Ennis Civic Trust tel 065 41127
Fnds Ulster Historic Church 50 Bedford St, Belfast BT2 7FW
Irish Georgian Society tel 01 676 7053.
Limerick Civic Trust tel 061 313399.

WALES

CADW tel 01222 465511
Chapels Heritage Society tel 01792 471589
Civic Trst, Emp Hse, Mint Stewart Sq, Crdff CF1 6DN

FAMOUS PEOPLE groups

William Morris Society 0181 741 3735.
A W N Pugin 122 Grange Rd, Ramsgate CT11 9PT

GREEN Building

SCOTLAND
Scottish Ecological Design Assn 01361 840230

WALES

CAT, Machynlleth, Powys 01654 703743

BUILDING & GARDENS Museums

ENGLAND

Architecture Centre, Narrow Quay, Bristol
Avoncroft Museum Bromsgrove 01527 831886
Beamish Stanley, Co Durham 01207 231811
Black Country Museum Dudley 0121 557 9643
British Lawnmower Museum, Lincs 01704 501336
Brooking Collection Dartford, Kent 0181 316 9897.
Building of Bath Museum 01225 333895.
Chelsea Physic Garden, Swan Walk, Chelsea.
Chiltern Open Air Museum, Bucks Tel 01494 875542
Lock Museum, West Midlands 01902 634542.
London Canal Museum Kings Cross 0171 713 0836.
Museum of Garden History 0171 401 8865.
National Fruit Tree Collection, Kent 01795 535286.
National Stone Centre, Derbyshire 01629 824533.
Pilkington Glass Museum, St Helens 01744 692014.
Stained Glass Mus., Ely Cathedral 01223 327367.
Weald & Downland Mus., W Sussex 01243 811363.
Westonbirt Arboretum, Glos 01666 880220.
Woodchester Mansion, Glos 01453 750455.
Working Silk Museum, Essex 01376 553399.

IRELAND

Bunratty Museum of Buildings, Bunratty, Co Clare
Cookware Museum, Co Tipperary 067 31711
Folk Museum, Knock, Co Mayo
Johnstown Castle Farm Museum, Wexford
Pattersons Spade Mill, Co Antrim 01849 433619.
Ulster Folk Museum, Co Antrim 01232 428428.

SCOTLAND

Ornamental Plaster, Peebles. Tel 01721 20212

COLLECTIONS & MONOGRAPHS

Abbott & Co, 1900-50 stained glass studio, at Lanca-
shire Record Office
Frank Matcham Club c/o Arthur Starkie, Theatre Royal,
Lury Lane, Wakefield
William Morris Gallery, Lloyd Park, Forest Road, Lon-
don E17, Tel 0181 527 3782.
also Kelmscott House, Kelmscott, Nr Lechlade, Oxon.
Tel 01367 252486.
Sir John Soane Museum, 12 Lincoln's Inn Fields, Lon-
don EC1. tel 0171 405 2107
Wright & Co, 1864-1987 ironwork & stove grates, at
Rotherham Museum

PERSONAL COLLECTIONS

(Phone and ask nicely. Access variable.)

ENGLAND

Brick Barn Brick & Tile Collection, Haddenham,
Cambs. Tel 01353 740461.

IRELAND

Peter Pearson (personal collection of rescued architec-
tural stuff) Dublin Tel 01 677 4361.
Manor Architects (library of artefacts and materials),
Moneymore, Co Londonderry. Tel 01648 748367.

education

CONSERVATION COURSES

Centre for Conservation Studies, King's Manor, York
YO1 2EP tel 01904 433963
**Centre for the Conservation of the Built Environ-
ment**, Hants. tel 01489 576248.
MSC Construction Refurbishment Management Bar-
tlett tel 0171 391 1738

The
ORIGINAL
Architectural Antiques Co. Ltd
FOR HOME & GARDEN
CIRENCESTER
01285 653532

StoneScape
Massive stocks:
• Reclaimed York Stone Flags
• New Flags (Sandstone/Limestone)
• Reclaimed Stone & Granite Setts
• Reclaimed Stone Kerbs/Channel
• Cobbles, Duckstones, Bricks, Slates
• Copings, Heads, Cills, Mullions
• Walling Stone
& much much more!
NATION/WORLDWIDE SERVICE
TEL: 01942 230230
FAX: 01942 230888
stonescapeuk@netscapeonline.co.uk
The Stone Yard, Kirkless Industrial Estate, Cale
Lane, New Springs, WIGAN WN2 1HF

RONSONS
RECLAMATION & RESTORATION
*Walling & Ornamental Stone
Bricks & Flagstones
Roof Tiles, Slates, Cotswold Tiles
Oak & Elm Beams
Farm Implements & Cider Mills
Cast Ironwork
Flooring & Much More*
Norton Barn, Wainlodes Lane
NORTON, Gloucestershire GL2 9LN
Between GLOUCESTER & TEWKESBURY
Tel 01452 731236
Fax 01452 731888

JURO
FARM & GARDEN
ANTIQUES
*Stone troughs, staddle stones,
cider mills, cider presses, old
farm and garden machinery,
carts, traps, carriages,
statuary, fountains, arbours,
urns, bird baths and sundials*
BROCHURE AVAILABLE
Juro, Whitbourne, Worcester
Tel & Fax: 01886 821261
Email: roy@juro.co.uk
Web: www.juro.co.uk

Comley Lumber Centre
Tel: 01252 716882
Fax: 01252 715201
Email clint@comleydemo.co.uk
Web www.comleydemo.co.uk
Old Pine Flooring resawn from
beams (Victorian to recent)
Planned to order, 3/4in thick, up to
12ins wide, up to 20ft long
Old Pine Floorboards
as they come, painted,
unpainted, and reworked to your
requirements
All from our own demolition
Call for prices
Trade welcome

**The Original
Architectural Salvage
Company of Ireland**
MARBLE WANTED
Marble suitable for
repairing fireplaces.
White statuary,
Carrara, Siena etc.
Corbels, tablets, end
blocks, jambs etc
Tel 00 353 86 8207700
Fax 00 353 1 677 3318
Dublin

**CRONIN'S
RECLAMATION**
Architectural Antiques,
Reclaimed Flooring,
Flagstones, Pavers,
French Floor Tiles,
Bricks, Slates, Roof Tiles,
Radiators, Doors, Fireplaces.
OPEN by appointment at:
Arch 25, Miles Street
off South Lambeth Road
VAUXHALL, London SW8
Tel: 020 7793 1499
Mobile 0385 288544

**The Original
Architectural Salvage
Company of Ireland**
LIGHTING WANTED
Antique lanterns,
rise & falls, wall,
desk, ceiling & table
lamps, chandeliers,
sets of glass shades,
brass, copper & iron
lights
Tel 00 353 86 8207700

NOTICE

PATTISON'S ARCHITECTURAL ANTIQUES
incorporating
THE ARCHITECTURAL SALVAGE STORE
 will be moving soon

Commencing SAT 14th OCTOBER 2000
 We are discounting most of our stock before the move. Trade and public welcome.

Open Tues-Sat 9.30am - 5.30pm
 Sunday 12am - 2pm

Unit 6 Darvell's Works, Common Road, CHORLEYWOOD, Herts WD3 5LP
 Tel 01923 284196. Fax 01923 282214. Email tony@pattant.com



arcsal.com

- Unique new web resource for architectural antiques
- Huge range of authentic materials, features and fittings
- Search service and worldwide delivery

www.arcsal.com

ASPECT ROOFING
 SPECIAL TILES

ASPECT ROOFING SPECIAL TILES

ASPECTS SPECIAL TILES DIVISION SPECIALISES IN THE SUPPLY OF RARE ROOF TILES AND COPING STONES

We operate a five acre site near Norwich in Norfolk where we hold thousands of different tiles in stock.

If we do not have the tiles or coping stones that you require in stock we can probably locate them using our extensive database.

We also have the facility to reproduce virtually any tile in our factory. Given a sample we can construct a mould and make replicas. The replicas are made from concrete but can be colour matched to most types of clay or concrete tile.

Delivery can be arranged nationwide.

For further information on any of the above or to add your stock to our database please contact: Chris Haythorpe/Ray Keeler Tel: 01953 717777 - Email: chaythorpe@aspect-roofing.demon.co.uk



PERIOD FLOORING

Drummonds

FREE PARKING
OPEN EVERY DAY

ARCHITECTURAL ANTIQUES LTD

The finest selection of architectural items and bathrooms - in 70,000 sq.ft. of heated showrooms

The Kirkpatrick Buildings, 25 London Road (A3), Hindhead, Surrey GU26 6AB Tel: 01428 609444 Fax: 01428 609445

ROBERT MILLS LTD

BUYS SPECTACULAR ARCHITECTURAL ITEMS

STAINED GLASS
 CARVED GOTHIC
 CHURCH INTERIORS, BARS
 PANELLED ROOMS
 & VICTORIAN SHOPFITTINGS

NARROWAYS ROAD, EASTVILLE, BRISTOL BS2 9XB
 TEL: (0117) 955 6542 FAX: (0117) 955 8146

NEIL PHILLIPS STAINED GLASS LTD

ANTIQUE STAINED GLASS WINDOWS

99 PORTOBELLO ROAD, LONDON W11 2QB
 TEL: 0171-229 2113 FAX: 0171-229 1963

ALSO AT:
 LIGHTWOODS' HOUSE
 LIGHTWOODS PARK, BIRMINGHAM
 TEL: 0121-429-7609 FAX: 0121-420 2316